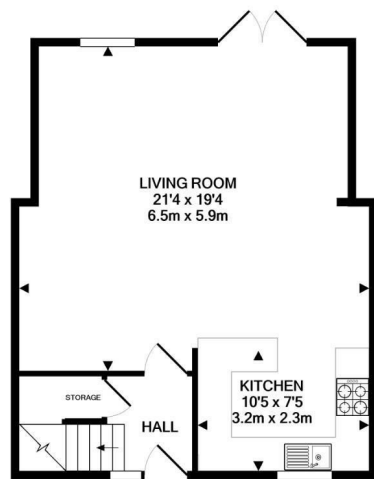


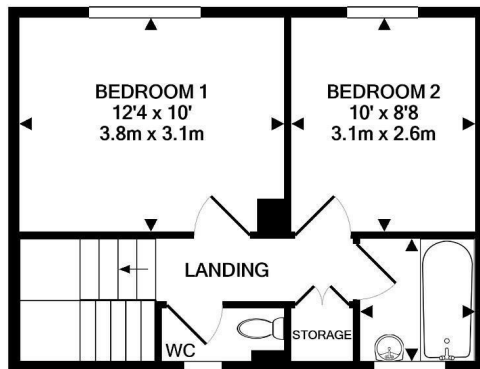


Keith
Ashton

Littlebury Court, Kelvedon Hatch
Brentwood



GROUND FLOOR
APPROX. FLOOR
AREA 507 SQ.FT.
(47.1 SQ.M.)



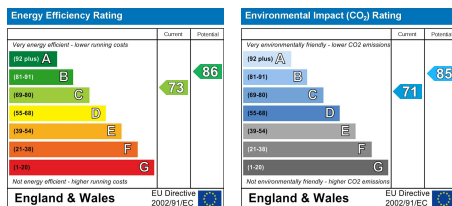
1ST FLOOR
APPROX. FLOOR
AREA 330 SQ.FT.
(30.7 SQ.M.)



8 Littlebury Court, Kelvedon Hatch, Brentwood, CM15 0XQ

This two bedroom mid terrace home is in a truly delightful part of Kelvedon Hatch, with all the neighbouring homes taking great pride in their appearance in this pedestrianised mews. The property is offered with no on-going chain and the current owners have made the downstairs area into a large open plan living room / kitchen area with large French doors leading out onto the garden. A new kitchen has been fitted and there is new flooring throughout. The bathroom also offers newly tiled walls and flooring. A separate cupboard houses the boiler which has just under a 10 year guarantee remaining. A garage is situated close by and an allocated parking is also available.

Guide Price £365,000



SERVICES:

Local Authority: Brentwood
Council tax band:
Post code: CM15 0XQ

VIEWING:

Strictly by prior arrangement with Keith Ashton Estate Agents

OPENING HOURS:

Monday to Friday: 8.45AM - 6.30PM | Saturdays: 9AM - 5.30PM | Sundays: 10AM - 2PM

MORTGAGE INFORMATION: We offer the additional facility of an in-house Independent Financial Adviser who will access all mortgage lenders with the purpose of providing you with the benefit of choice. For quotations or comparables please call 01277 375757 or visit our interactive website at www.mortgagebusiness.net



We the Agent have not tested any apparatus, fittings or services for this property. The plot size is intended merely as a guide and has not been officially measured or verified by the Agent. Photographs are for illustration only and may depict items which are not for sale or included in the sale of the property. As part of the service we offer we may recommend ancillary services to you which we believe may help you with your property transaction. We wish to make you aware, that should you decide to use these services we will receive a referral fee. For full and detailed information please visit 'terms and conditions' on our website www.keithashton.co.uk

Brentwood
Tel. 01277 260858

Village Office
Tel. 01277 375757

Lettings Office
Tel. 01277 202200

Explore more @ www.keithashton.co.uk

